

“Consider a design object for a non human user that engages humans to perform an action on the non-human user’s behalf”.

The Problem.

Street Lighting

Any wildlife that is affected by the effects of artificial lighting over night, particularly lighting used in outdoor spaces.

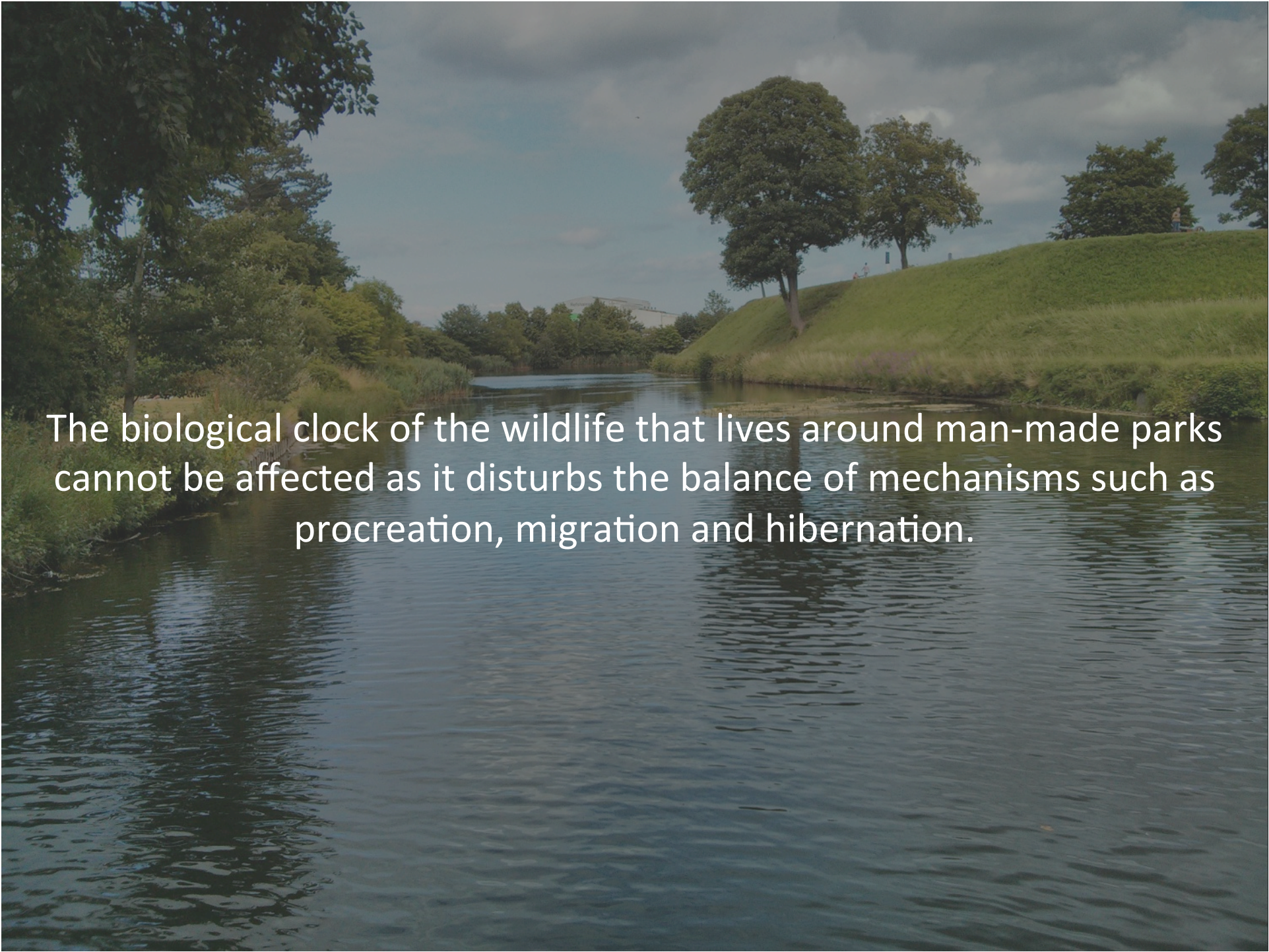
Wildlife – including insects, amphibians, birds and mammals need both daylight and darkness for normal functioning. Daily and annual rhythm that corresponds to the cycles of light, temperature, availability of food and other factors affecting behavioral and physiological functions.



Most of the animals observed on the pond seems to look for shelter under shrubs that provide shade and privacy from others, particularly humans. Only those animals in search of food tend to move away from they shelter and gather resources.



Privacy and the rhythm of the cycles of the community are affected by artificial lighting, the use of this artificial lighting is not optimized for the needs of the user, sustainability is an issues and the current solution it's affecting the life of the wildlife.

A photograph of a park landscape. In the foreground, a calm body of water reflects the sky and surrounding greenery. To the right, a grassy hill rises, topped with several large, leafy trees. A few small figures of people can be seen on the hill. The sky is overcast with grey clouds. The text is overlaid on the water in the center of the image.

The biological clock of the wildlife that lives around man-made parks cannot be affected as it disturbs the balance of mechanisms such as procreation, migration and hibernation.

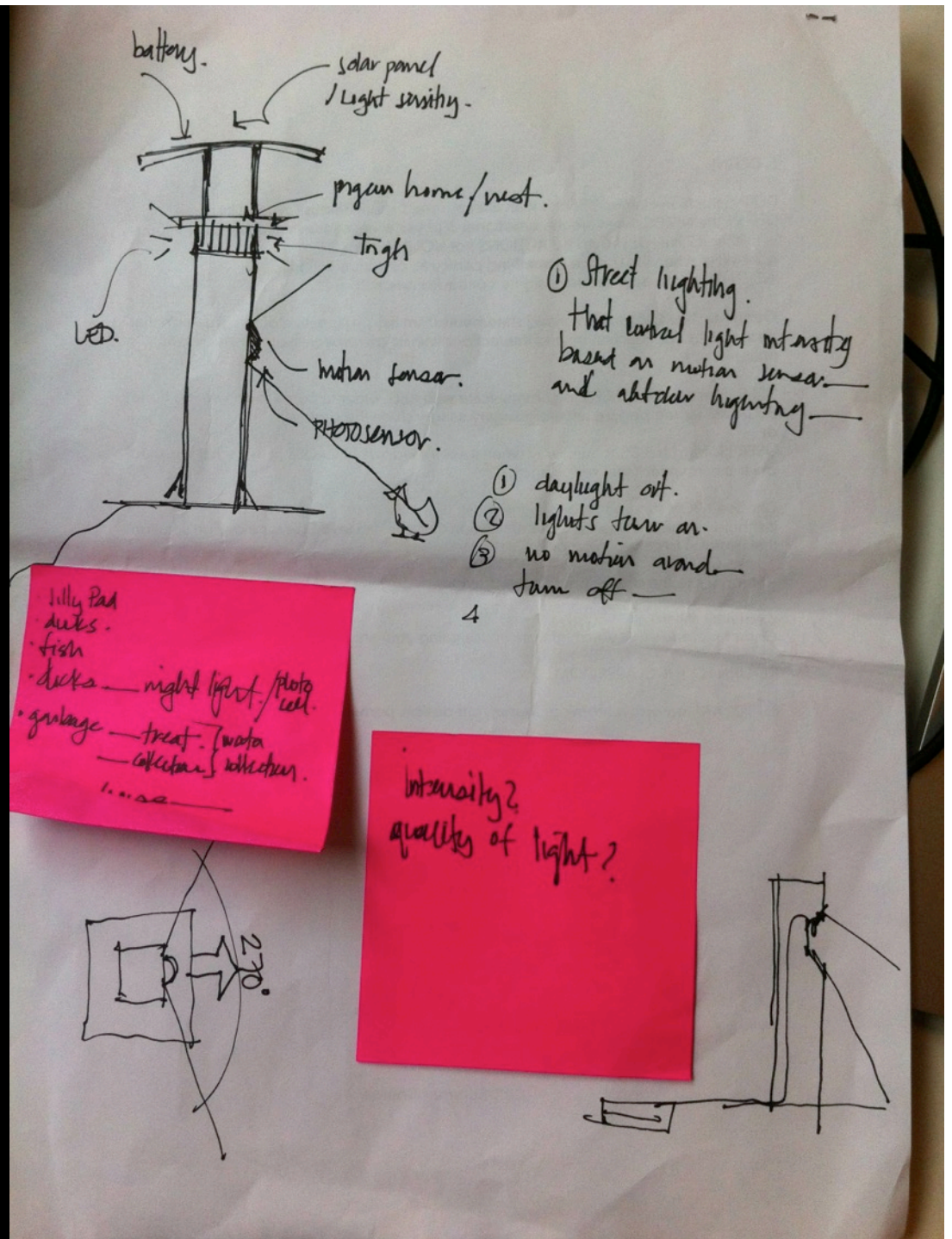
Prometheus

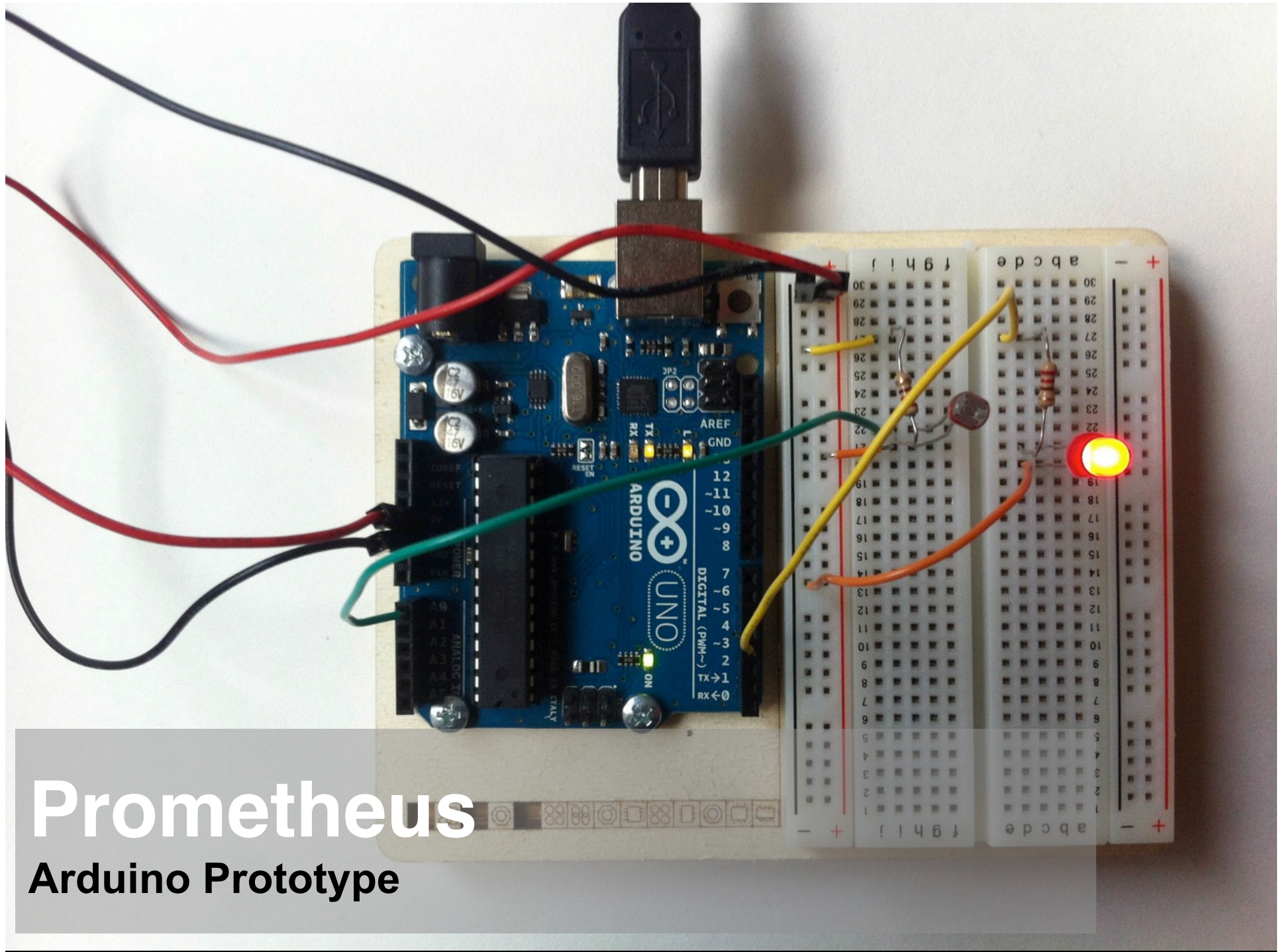
Street Lighting

SOLUTION

Prometheus

Research and Sketches





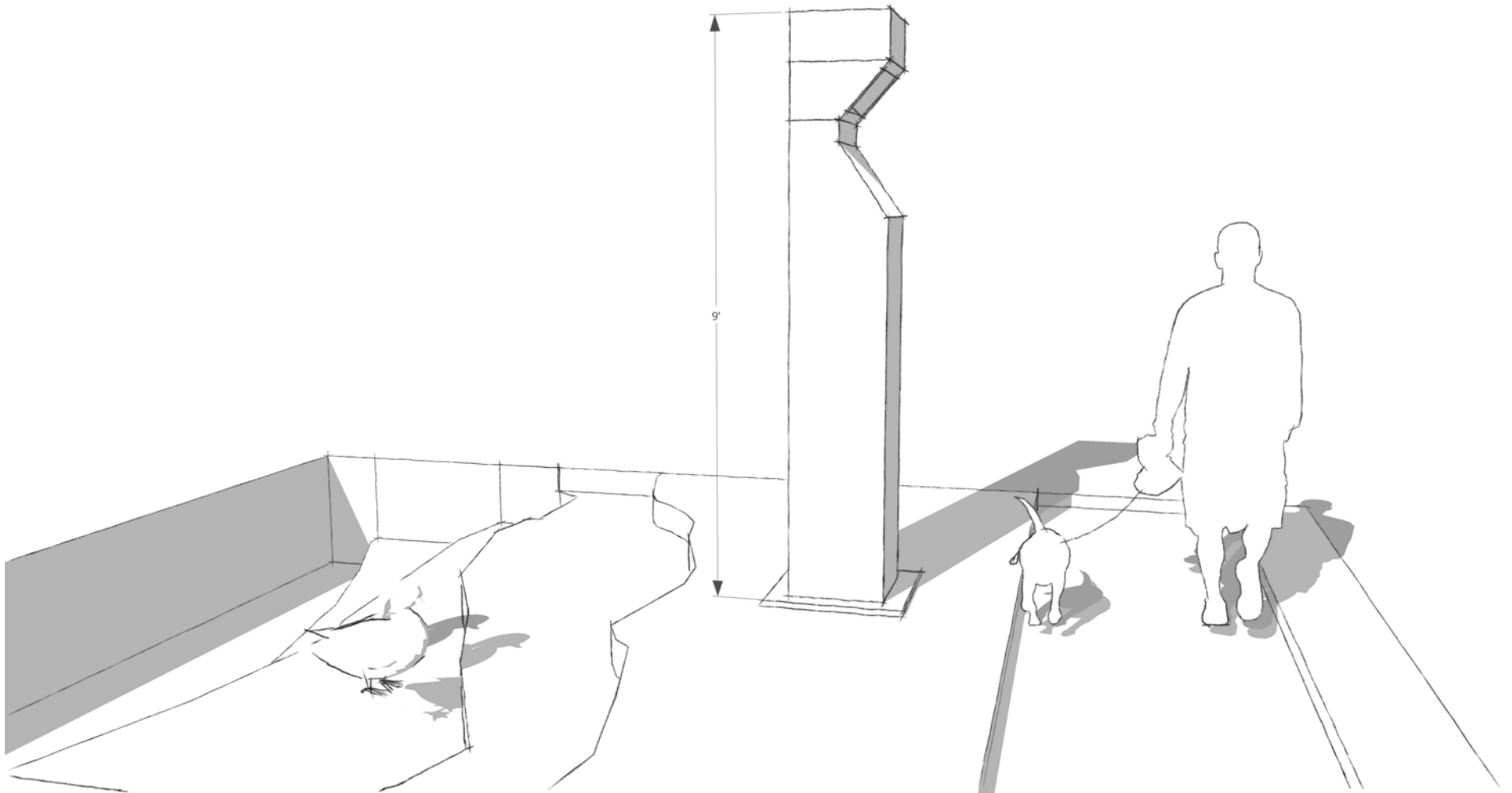
Prometheus

Arduino Prototype



Prometheus

Physical Prototype



Prometheus

3D Visualization